



Maths-Whizz Impact Report

Funded by:





Table of Contents

Maths-Whizz Impact Report

Introduction	3
Kinia Support	4
Young People Impacted	5
Schools using Maths-Whizz	6
Maths-Age	9
Funding	15
Feedback	16

Funded by:



Introduction

The aim of this report is to highlight the growth in MathsWhizz since year 1 of our project when Linesight started to fund.

Maths-Whizz is an AI enabled virtual maths tutor that is aligned to the national UK curriculum. The tutor develops a unique personalised learning journey for all students. Through engaging lessons and continuous assessment, the tutor tracks students' progress, maintaining an up-to-date understanding of their needs and providing the appropriate support at all times.

3,310 _ Young People Impacted.

Teachers have reported it is a huge benefit and great addition to their classrooms and it meets everyone's learning needs, from the students with a lower-ability in Maths, to their high achieving students; *"My gifted children were able to work at a higher level than everyone else. This really helped to challenge them in maths"*.

Kinia Support

As a result of funding received, Kinia has been able to provide free access to the Maths-Whizz platform for Irish schools and education settings. Kinia's dedicated project officer supports the schools throughout the year in a variety of ways such as creating student's initial profiles, running training sessions, sending fortnightly progress reports and visiting classrooms to see Maths-Whizz in action.

"We are so delighted to be able to allow students access to Maths Whizz with thanks to Kinia as it would not be possible for us as a small school to purchase licences otherwise."

Teacher, Ughtyneill NS

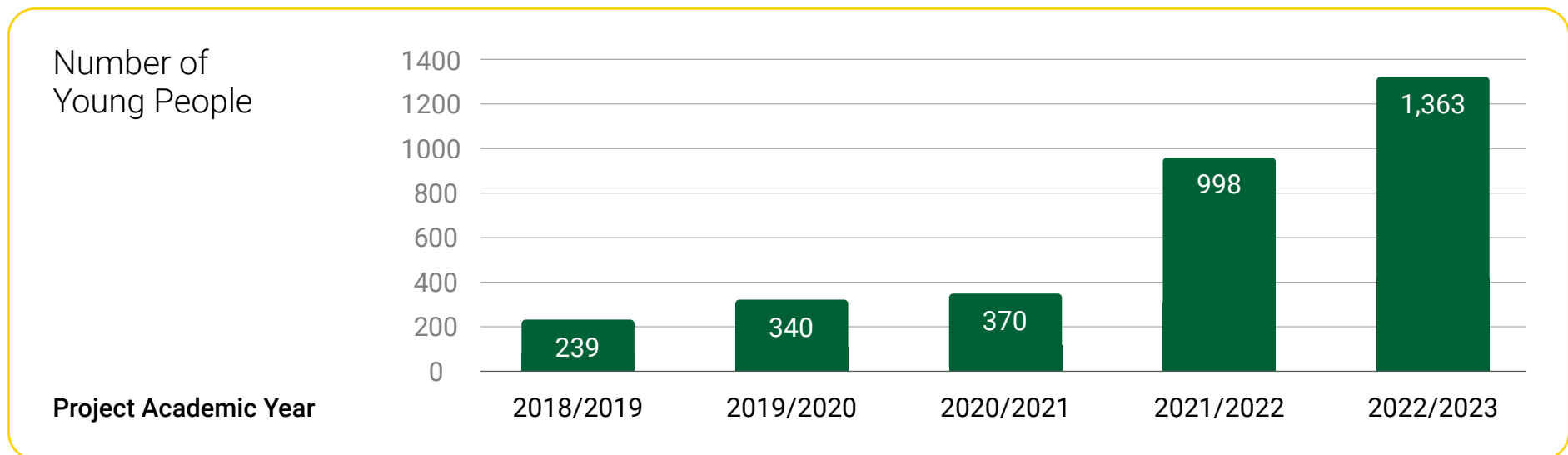
"We have received very good support from Kinia and any questions that we had have been answered."

Principal, Knockmahon NS, DEIS Rural

Young People Impacted



Since Year 1 of Linesight funding our Maths-Whizz project there has been a consistent increase in the number of young people benefitting from the programme each year.



Schools using Maths-Whizz

Over the course of the 5 years we have supported and established Maths-Whizz in a total of 31 Primary schools, 3 Post-primary schools, 1 Youth centre and 1 Homework club. There has also been an increase in the number of schools located outside of Dublin participating in the project.

Due to the success of the programme schools are often eager to continue using Maths-Whizz with new classes for another year.

"Maths Whizz has been a great asset to our pupils this year and we would love to continue it next year"
Mount Sion Primary School, Urban DEIS Band 1

"This has proven very successful this year and we would like to continue it with next year's fourth class"
St Mary's Primary School, Urban DEIS Band 1

Priority is given to DEIS schools when allocating the licences at the beginning of the year. The personalisation of each student's Maths-Whizz learning journey is very beneficial in these settings.

"I hope that we can continue using Maths-Whizz in our school because I think it is playing a huge part in increasing numeracy levels in our DEIS 1 school. It helps greatly for children who have poor attendance. The class teacher has to keep moving through the different topics but the child only moves through the program when he/she has mastered a particular concept."

Principal, Scoil Padre Pio, Urban DEIS Band 1

The maps below show the relevant schools/ education settings and their location for each academic year of the project so far.



YEAR 1
2018/2019

- 1 Homework club
- 1 Youth centre
- 1 DEIS Primary school

Dublin

- Aisling Project Ballymun
- Ringsend and Irishtown Homework Club
- St James' Primary School, Dublin 8

YEARS 2-3
2019-2021

- 2 DEIS Primary schools
- 1 Youth centre

Dublin

- Aisling Project Ballymun
- St James' Primary School, Dublin 8
- St Patrick's BNS Ringsed

YEAR 4
2021-2022

- 2 DEIS Primary schools
- 1 Youth centre

Clare

- Ennis Educate Together

Cork

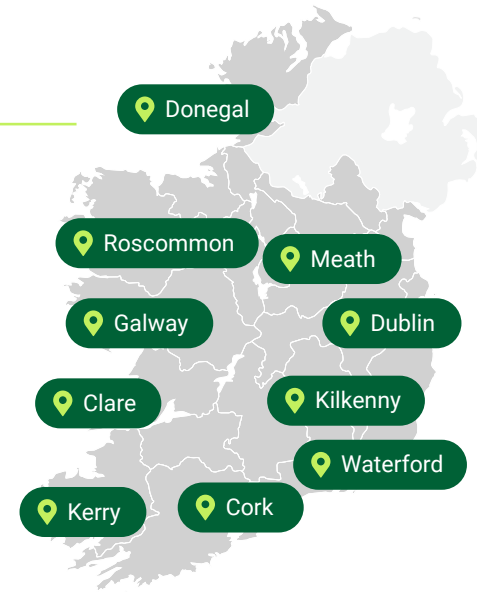
- Scoil Padre Pio
- Scoil Maria Assumpta
- St Vincent's NS

Donegal

- Glebe NS

Dublin

- Aisling Project Ballymun
- Mary Queen of Angels, Ballyfermot
- Our Lady Immaculate SNS Darndale
- Our Lady of Consolation Donnycarney
- Our Lady of the Wayside Inchicore
- Our Lady's NS Clonskeagh
- Scoil Mhuire Ogh Loreto Crumlin
- Scoil Mhuire SNS Blakestown
- St Aidan's SNS Tallaght
- St Anne's Primary School
- St Christopher's Ballsbridge
- St Mary's Garristown
- St Mary's Dorset Street
- St Patrick's BNS Ringsend



- St Paul's Primary School
- Stanhope Street Primary School
- Blakestown Community School
- Rosary College
- St Dominic's

Galway

- Lettergesh NS

Kilkenny

- St Brigid's Kells

Meath

- Ughtyneill NS

Roscommon

- St Paul's NS Castlereagh

Waterford

- Mount Sion Primary School

YEAR 5
2022-2023

28 Primary schools (20 DEIS)
1 After-school club

Clare

Ennis Educate Together

Cork

Scoil Padre Pio

Scoil Maria Assumpta

St Vincent's NS

Donegal

Glebe NS

Dublin

Aisling Project Ballymun

Mary Queen of Angels, Ballyfermot

North Dublin Muslim National School

Our Lady Immaculate SNS Darndale

Our Lady of Consolation Donnycarney

Our Lady of the Wayside Inchicore

Our Lady's NS Clonskeagh

Scoil Mhuire Ogh Loreto Crumlin

Scoil Mhuire SNS Blakestown

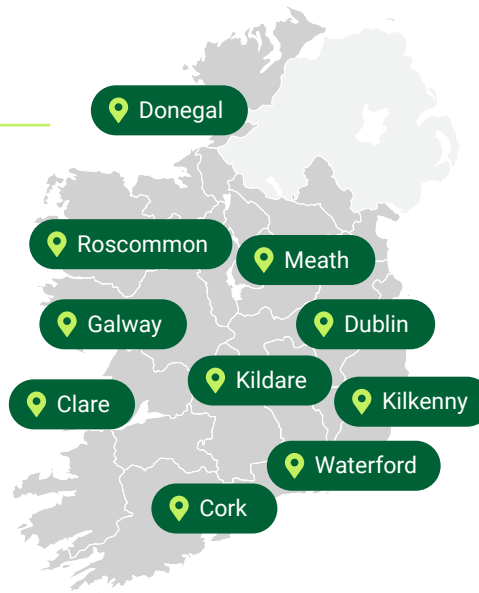
St Aidan's SNS Tallaght

St Christopher's Ballsbridge

St Mary's Garristown

St Mary's Dorset Street

St Patrick's BNS Ringsend



St Paul's Primary School

Stanhope Street Primary School

Galway

Lettergesh NS

Kildare

Straffan NS

Kilkenny

St Brigid's Kells

Meath

Ughtyneill NS

Whitecross NS

Roscommon

St Paul's NS Castlerea

Waterford

Knockmahon NS

Mount Sion Primary School



Maths-Age

The maths-age metric used in the Maths-Whizz programme represents how far through the curriculum a student is. Research conducted by Whizz-Education - with over 12,000 students and verified by independent experts - found that students who used Maths-Whizz for the recommended time (45-60 minutes a week) increased their Maths-Age, on average, by 18 months in the first year of use. We provide ongoing support to schools throughout the year to ensure they achieve the recommended usage.

We have seen that schools such as Lettergesh and Mount Sion who have been using Maths-Whizz across 2 years of the project consistently have had an overall increase in their average Maths-Age.



Mount Sion Student Profile

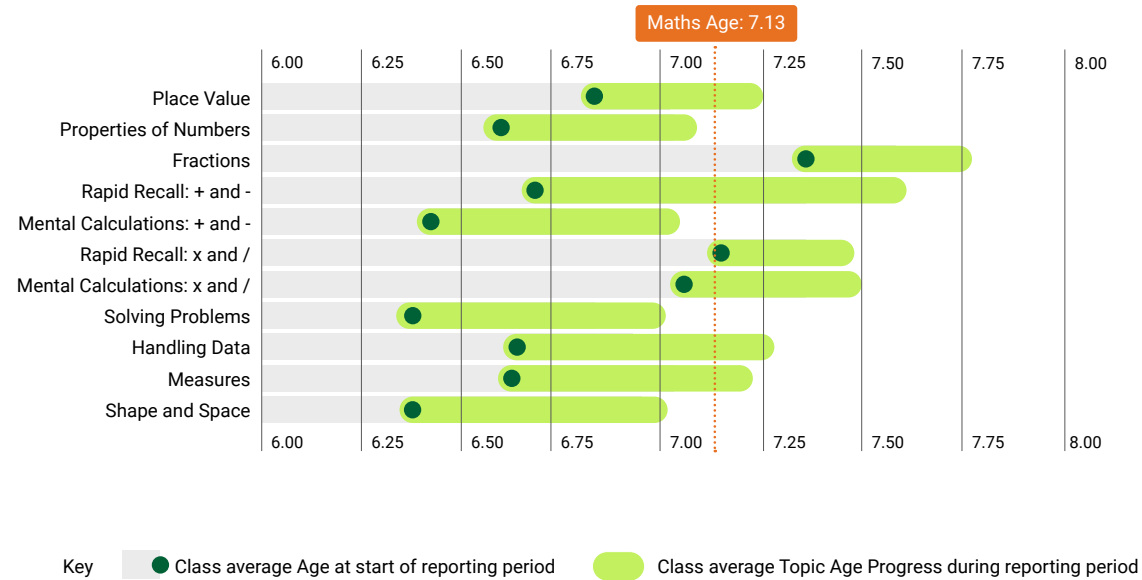


Maths-Age Sept' 2021: **7.64**

Maths-Age Jan' 2023: **9.44**

Source: Whizz Education

Lettergesh NS Class Profile



Average Maths-Age Sept' 2021: **6.05**

Average Maths-Age Jan' 2023: **7.13**

Source: Whizz Education

Students in Mount Sion using Maths-Whizz consistently saw a Maths-Age(weeks) increase that was larger than the actual time span in weeks.

OUTCOME	TIME SPAN (WEEKS)	IMPROVEMENT IN MATHS AGE (WEEKS)
STUDENT 1	17.5	26.5
STUDENT 2	17.5	23.5
STUDENT 3	17.5	25
STUDENT 4	17.5	21.5
STUDENT 5	17.5	123.5
STUDENT 6	17.5	36.5
STUDENT 7	17.5	56

Data provided by Whizz-Education in January 2023

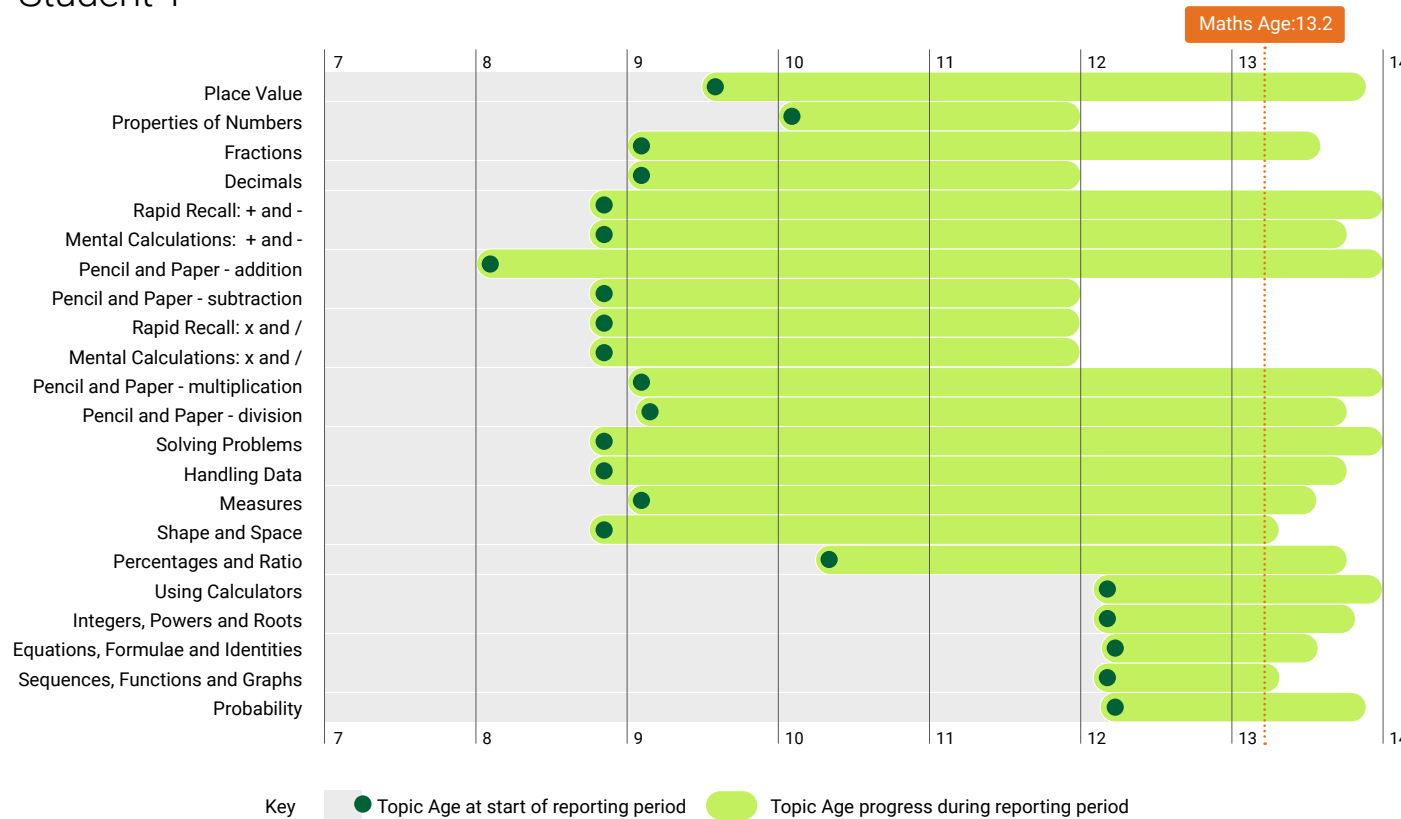


Pupil Profiles

As seen in the graphs in October 2020 these students' Maths Age was less than their chronological age. With consistent usage of Maths-Whizz and progressing through the curriculum their Maths-Age is currently higher than their chronological age, as of March 2023.

Below are examples of two pupils who have been using Maths-Whizz for an extended period.

Student 1

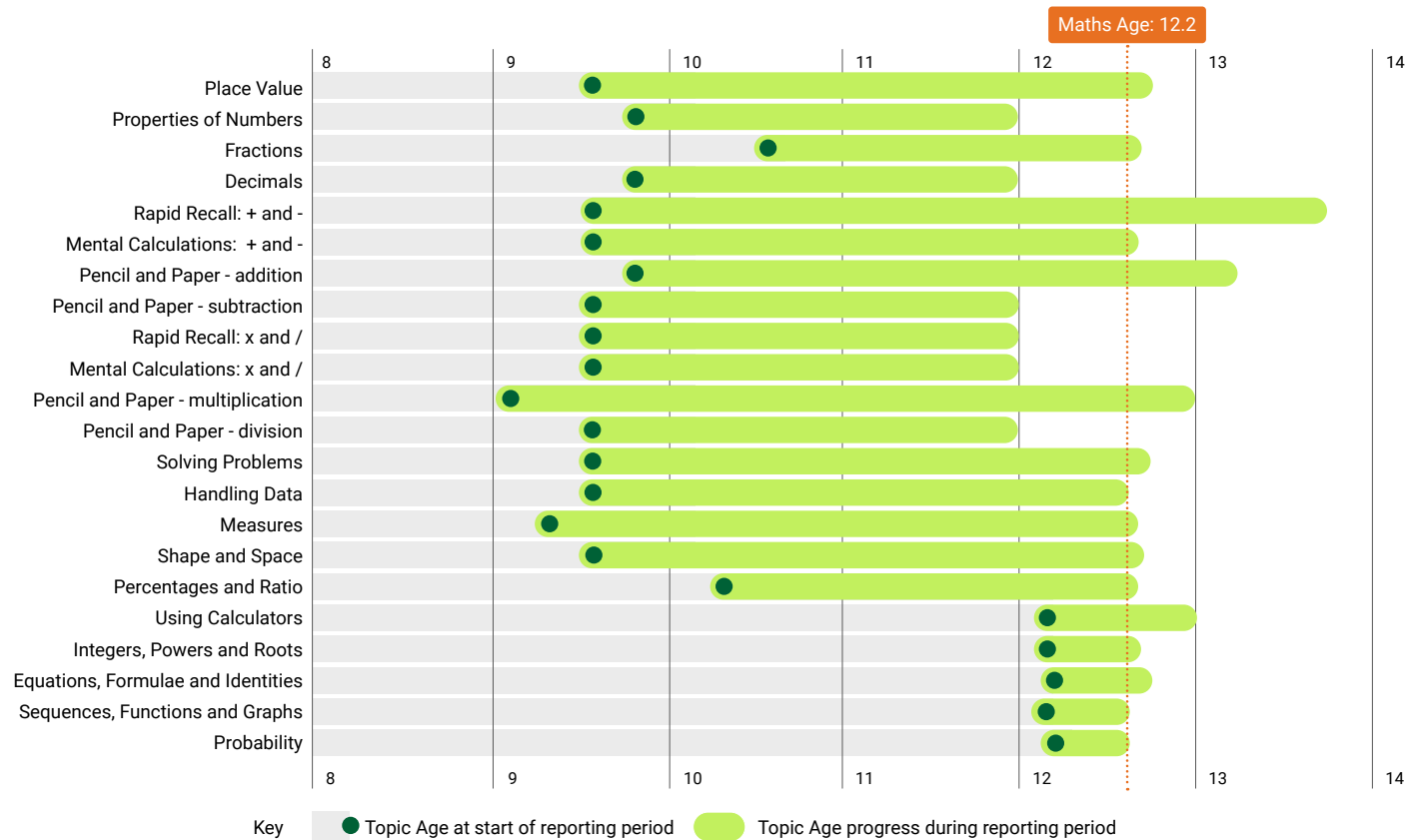


	Oct/'20	Mar/'23
Chronological Age	10.13	12.56
Maths-Age	9.56	12.60
Difference	-0.57	+0.04

This student has made 3.04 years progress on their maths age in 2.43 years

Source: Whizz Education

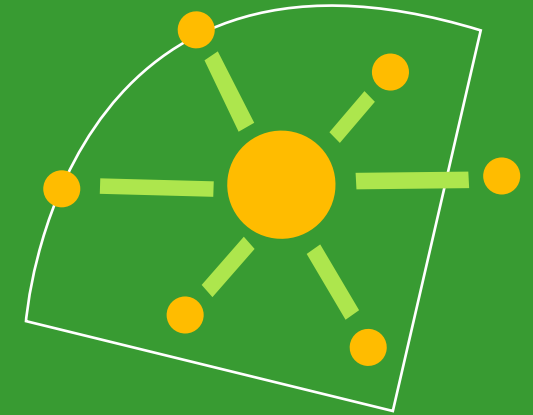
Student 2



	Oct/'20	Mar/'23
Chronological Age	10.00	12.43
Maths-Age	8.90	13.20
Difference	-1.1	+0.77

This student has made 4.3 years progress on their maths age in 2.43 years

Source: Whizz Education



Funding

Since the initial year when Linesight began funding the project there have been other funders brought on board. **Community Foundation Ireland** and **basis.point** have provided extra funding for this project which has assisted with increasing our impact within this project. **basis.point** have agreed to provide funding for 3 more years of the project.



Feedback

At the end of each project year we seek feedback from the educators involved through surveys which helps us to improve our training, support and roll-out of the programme. Training sessions and visits to schools using Maths-Whizz has been another opportunity to listen to and receive feedback from both educators and students using Maths-Whizz. Below are some comments and quotes received from users of Maths-Whizz across the last 5 years:

Year 1

Student story

Dana is a 10-year-old student in Ringsend and Irishtown Homework Club and was very anti-Maths-Whizz to begin with. She complained to staff and her parents. However, at the end of this term when problems arose in running Maths-Whizz she was frustrated that she couldn't go on it. When she puts her mind to it she was extremely good on the platform, one week getting 8 progressions over a 40-minute period! She was also the only person in Ringsend to work on the platform at home.

Year 2

"Absolutely brilliant!"

Class teacher, St Patrick's BNS Ringsend, Urban DEIS Band 1

"Maths-Whizz made Maths fun and helped the class achieve goals"

Principal, St Patrick's BNS Ringsend, Urban DEIS Band 1

Year 3

"It has been an essential resource this year. The children absolutely love it. I love the insights I get from the diagnostic tools. It became a very important part of our day." Class teacher, St Patrick's BNS Ringsend, Urban DEIS Band 1

"I know that Maths Whizz is helping meet the needs of the children in my class in a differentiated way and allows me to identify areas that children need help with in real time. I love the programme." Class teacher, St Patrick's BNS Ringsend, Urban DEIS Band 1

Year 4

"The children really enjoyed the independent learning style that maths whizz offered and we really feel their maths skills have come along really well."

JHarrington, St Mary's NS Garristown

"We've used Maths Whizz with 5th classes this year and both teachers and pupils find it brilliant!" Principal, St Aidan's NS Tallaght, Urban DEIS Band 1

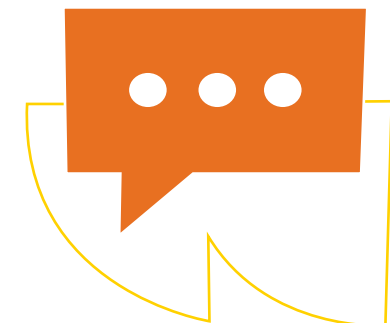
Year 5

"Maths Whizz allows every student to participate in the Maths curriculum in a fun and engaging way. Every student feels they are succeeding regardless of their ability."

Class teacher, Mount Sion Primary School, Urban DEIS Band 1

"I love the reporting and being able to see how each child is performing"

6th class teacher, Scoil Mhuire SNS, Urban DEIS Band 1



kinia

Learning is Life

kinia.ie

